



jordan fishwick

2 Hall Bank North, WA16 7JD
Guide Price £139,950



Hall Bank North Mobberley WA16 7JD

Guide Price £139,950

A rare opportunity to purchase this well proportioned ground floor apartment near to Mobberley Village. This one bedroom apartment requires modernisation throughout, offering an excellent opportunity for a purchaser to modernise and make a property their own. Small garden area to the side of the property. Early interest expected due to the Location. Contact Jordan Fishwick on (01625) 532000 to arrange your own viewing.



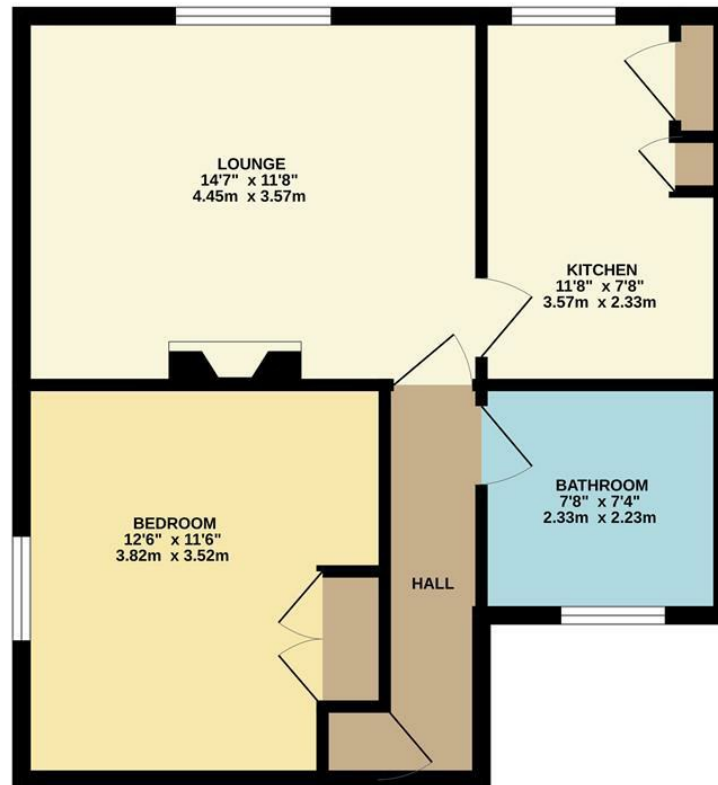


- Ground Floor Apartment
- One Bedroom
- Mobberley Village Location
- In need of Modernisation
- Chain Free
- Parking



Energy Efficiency Rating		
	Current	Potential
Very energy efficient - lower running costs		
(92 plus) A		
(81-91) B		
(69-80) C		75
(55-68) D		
(39-54) E	52	
(21-38) F		
(1-20) G		
Not energy efficient - higher running costs		
England & Wales		EU Directive 2002/91/EC

GROUND FLOOR
495 sq.ft. (45.9 sq.m.) approx.



TOTAL FLOOR AREA: 495 sq.ft. (45.9 sq.m.) approx.
Measurements are approximate. Not to scale. Illustrative purposes only.
Made with Metropix ©2025



These particulars are believed to be accurate but they are not guaranteed and do not form a contract. Neither Jordan Fishwick nor the vendor or lessor accept any responsibility in respect of these particulars, which are not intended to be statements or representations of fact and any intending purchaser or lessee must satisfy himself by inspection or otherwise as to the correctness of each of the statements contained in these particulars. Any floorplans on this brochure are for illustrative purposes only and are not necessarily to scale.

Offices at: Chorlton, Didsbury, Disley, Hale, Glossop, Macclesfield, Manchester Deansgate, Manchester Whitworth Street, New Mills, Sale, Wilmslow and Withington

36-38 Alderley Road, Wilmslow SK91JX
01625 532000

wilmslow@jordanfishwick.co.uk
www.jordanfishwick.co.uk